

Home report

Powered by CUBICASA

352 Avenida Sevellia
Laguna Woods

Highlights

**1 Kitchen**

**1 Living room**

**2 Bedroom**


**1 Bath**


**9 Doors**


**6 Windows**


Nearby services


Data source: Google Maps


**Moulton-Calle Cortez, 0.0 mi**

**ALDI, 0.5 mi**

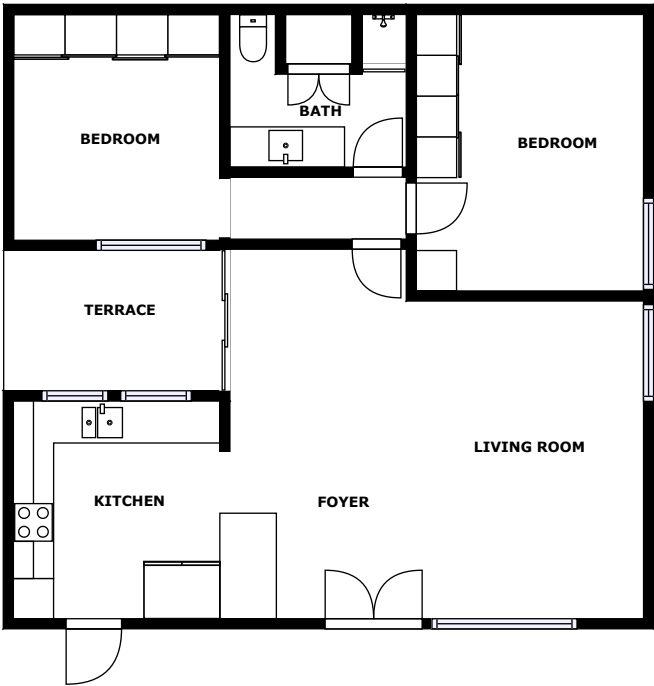
**Palm Terrace Healthcare & Rehab Center, 0.4 mi**

**Boys & Girls Clubs of Capistrano Valley, 0.2 mi**

**Bon A Pita Inc, 0.4 mi**

**Saddleback Memorial Medical Center Heliport, 0.7 mi**

Floor plan



Appendix 1: Data sheet

Outdoor - 1	Outdoor - Terrace - 1	LivingRoom - 1
Bath - 1	Bedroom - 2	Entry - 1
Entry - Foyer - 1	Kitchen - 1	